

abbotFox
Bespoke.



Blundeston, NR32
Offers In Excess Of £850,000

“

abbotFox Bespoke is a private office within abbotFox specialising in the sale and letting of some of the region's most exclusive and prestigious properties.

Samuel Le Good | **Head of Bespoke**







THE DETAIL _____

abbotFox Bespoke presents this striking and individually designed detached residence, occupying a private position within the highly sought-after Suffolk village of Blundeston. Offering over 2,400 sq. ft. of beautifully appointed accommodation, this exceptional home effortlessly combines contemporary luxury with breath taking countryside views, creating a lifestyle opportunity that is rarely available. Featuring four generous bedrooms, three bathrooms, a stunning principal suite with dressing room and open-plan ensuite, alongside a dedicated cinema room with front and rear balconies overlooking open fields, Wilmar has been thoughtfully designed for modern family living and entertaining alike.

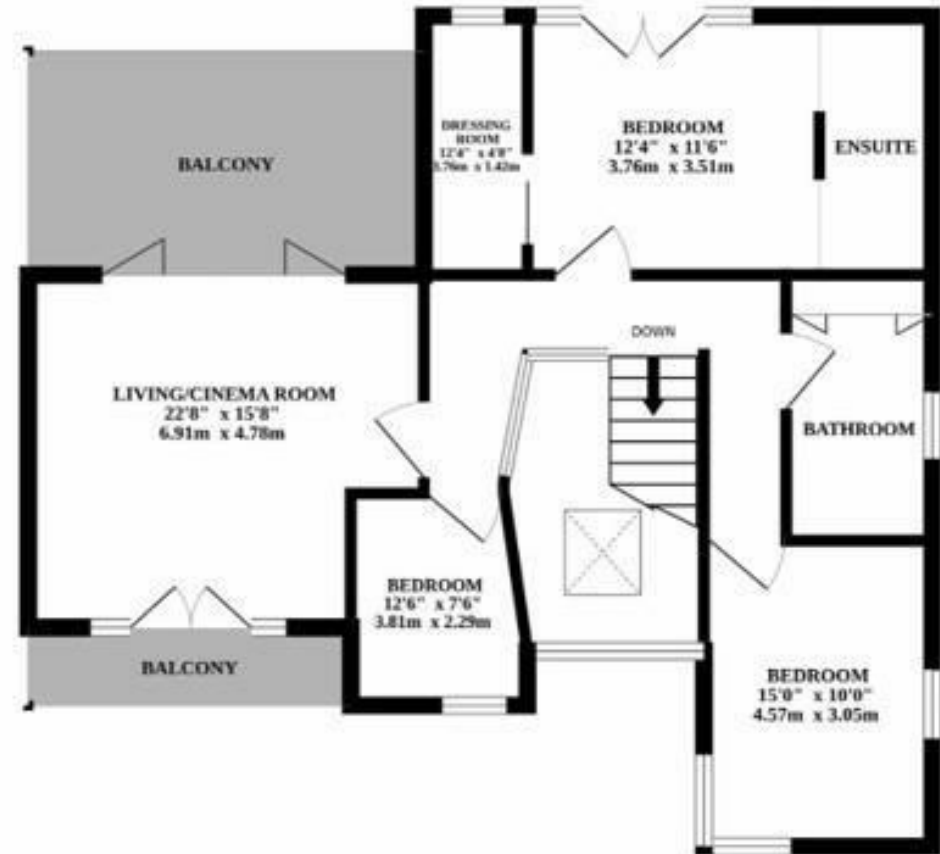
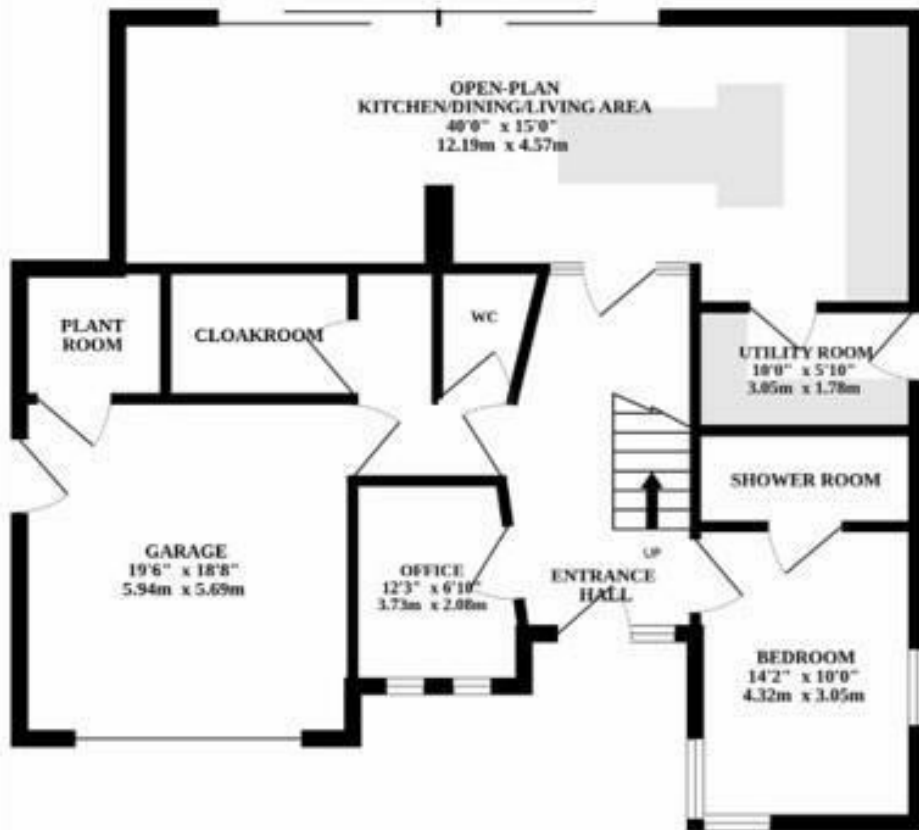






THE HIGHLIGHTS _____

- Stunning contemporary design
- Sought-after village location
- Flexible layout
- Generous living accommodation
- Spacious, private plot
- Potential to extend (STPP)
- Stylish open plan living areas
- High quality finish throughout
- Ideal family home
- Viewing advised



Let's talk

01603 660000

sales@abbotfox.co.uk

@abbotfox @abbotfoxbespoke

EPC RATING -

Disclaimer – In accordance with the Property Misdescriptions Act, the company abbotFox gives notice that all descriptions, references to condition, necessary permissions for use and other details are given in good faith and believed to be correct, but any purchaser should not rely on them as statements of fact, and must satisfy themselves by inspection or other means, as to their accuracy.